

# High Flow Portable Oil Filtration System

## HIGH FLOW PORTABLE FILTRATION SYSTEM

The harmful effects of particulate contamination in hydraulic, lubrication, and fuel oils have been well documented. Oil Filtration Systems, Inc. has developed a line of High Flow Portable Oil Filtration Systems to quickly and reliably remove particulate contamination from a variety of fluids, enabling end-users to extend the life of component parts, reduce maintenance costs and down-time, and maximize profitability. These systems are portable, and can be used for fluid transfer, high velocity oil flushing, or off-line kidney-loop filtration. Filter elements are available in a wide variety of micron sizes and media types to handle virtually any application.



400 GPM Portable Filtration System

### Standard Features:

- Positive Displacement Gear Pumps or Self-Priming Centrifugal Pumps
- TEFC Electric Motors
- NEMA 4 Electric Control Panels with Main Power Disconnect and Pushbutton On-Off Switches
- Variable Frequency Drives

**Flow Rates From 20-2000 GPM or Higher.**

**Achieve Very Low Particle Counts To Meet Or Exceed An ISO 16/13/10 Cleanliness Level**

**Achieve Reynolds Number >4000 To Perform High Velocity Flushing Of Pipes**

### Suitable For Use With:

- Hydraulic Oil
- Lubrication Oil (ISO 32 – ISO 680)
- Turbine Lube Oil
- Diesel Fuel
- EHC Fluid (Phosphate Ester)
- PAO Fluid

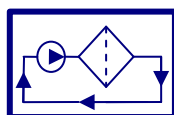
### Filter Element Options:

**High Efficiency Pleated Microglass Particulate Removal Filter Elements**

Available In Micron Sizes Ranging From 1-Micron To 25 Micron Beta<sub>≥200</sub> per ISO 4572 (99.5% Efficient)

**Nominally Rated Pleated Cellulose Filter Elements or Polyester Felt Bag Filters**

Cost Effective Way To Remove Large Amounts of Bulk Particulate Contamination From Very Dirty Systems

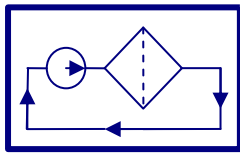


**OIL FILTRATION SYSTEMS, INC.**

Phone: 830-816-3332

Fax: 830-816-3331

[www.oilfiltrationsystems.com](http://www.oilfiltrationsystems.com)



# High Flow Portable Oil Filtration System

## Electrical Specifications

**Voltage:** 480 VAC, 3 Ph, 60 Hz  
(Other voltages are available upon request)

**Motors:** Premium Efficiency TEFC or  
Explosion Proof (if required)

**Control Panel:** NEMA 4 or NEMA 7

## Mechanical Specifications

**Flow Rate Options:** 20 GPM - 2000 GPM

**Filter Housings:** Multiple Configurations for  
High Flow and Particulate Removal

**Plugged Element Indication:** Differential  
pressure gauges and indicator lights provide  
positive indication when the elements are  
plugged and need to be changed.

**Pump:** Heavy-duty self-priming positive  
displacement style with built in relief.

**Connections:** 1" to 4" NPT with Camlock or  
Flanged Connections (Other Options Are  
Available).

**Power Cord:** 25' / 7.62 meter heavy gauge  
with high visibility yellow color (standard).

**Hoses:** 20' Inlet and Outlet Hoses

**Oil Sample Ports:** Upstream & Downstream  
Sample Ports

## Custom Options Are Available

**For technical support & applications  
help, call us at 800-449-0262.**



## SYSTEM ORDERING INFORMATION

**Standard part-number POFS- \*\* -\*\* -\*\* - \*\***

Indicates Portable Oil Filtration System	_____	_____	_____	_____
Indicates flow rate (20-1000 gpm)	_____	_____	_____	_____
Indicates particulate removal housing (PR)	_____	_____	_____	_____
Indicates water removal housing (WR)	_____	_____	_____	_____
Indicates acid removal housing (AR)	_____	_____	_____	_____

(Note: If not using WR or AR then omit from P/N.)

## ELEMENT ORDERING INFORMATION

Pleated particulate removal elements  
available in 1, 3, 5, 15, & 25 micron  
increments. P/N: OFS840P(\*\*)  
Insert micron size 1, 3, 5, 15, or 25 \_\_\_\_\_

Water removal element P/N: OFS840W

Acid removal element P/N: OFS840AR

